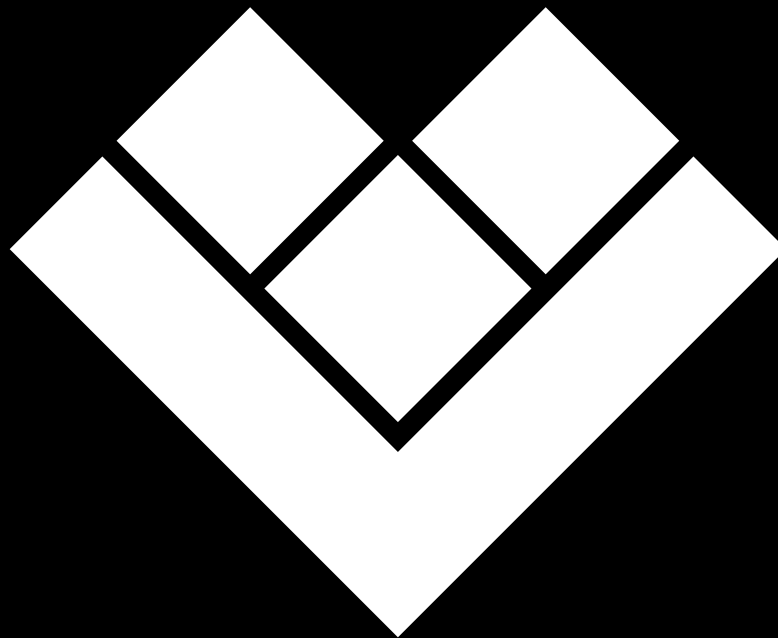


CERAMIC TILES
Vol. 1 | April '18



FOR THE LOVE OF TILES





A G R O U P O F

AntiqueTM

VITRIFIED TILES

the beginning

In 1994, the Antique group of companies marked the inception of their journey into ceramics. After gaining experience galore in various other fields such as textiles, non - wovens and minerals, the Antique group of companies is now embarking on a novel ceramic brand, Antiqua Ceramics Pvt. Ltd. With about 7 other daughter companies under it's umbrella, the sky is the limit for the Antique group.

Total Production Capacity
1,63,20,000 SQM/Year

1994
Fine Ceramic
Pvt Ltd

1998
Shine Ceramic
Pvt Ltd

2004
Antique Granito Pvt Ltd
2,16,000sqm

2010
Antique Mineral
Pvt Ltd

2010
Antique Johnson
Ceramic Pvt Ltd

Quartz & Artificial
Marble Production

2015

Antiqua Ceramic Pvt. Ltd.
Antique Power Pvt. Ltd.

2013

Antique Textile Pvt Ltd

2018



Uniform Brand for all
Products by
Shivam Enterprise

2014

Shivam Enterprise
Export House

2010

Antique Non Woven Pvt Ltd

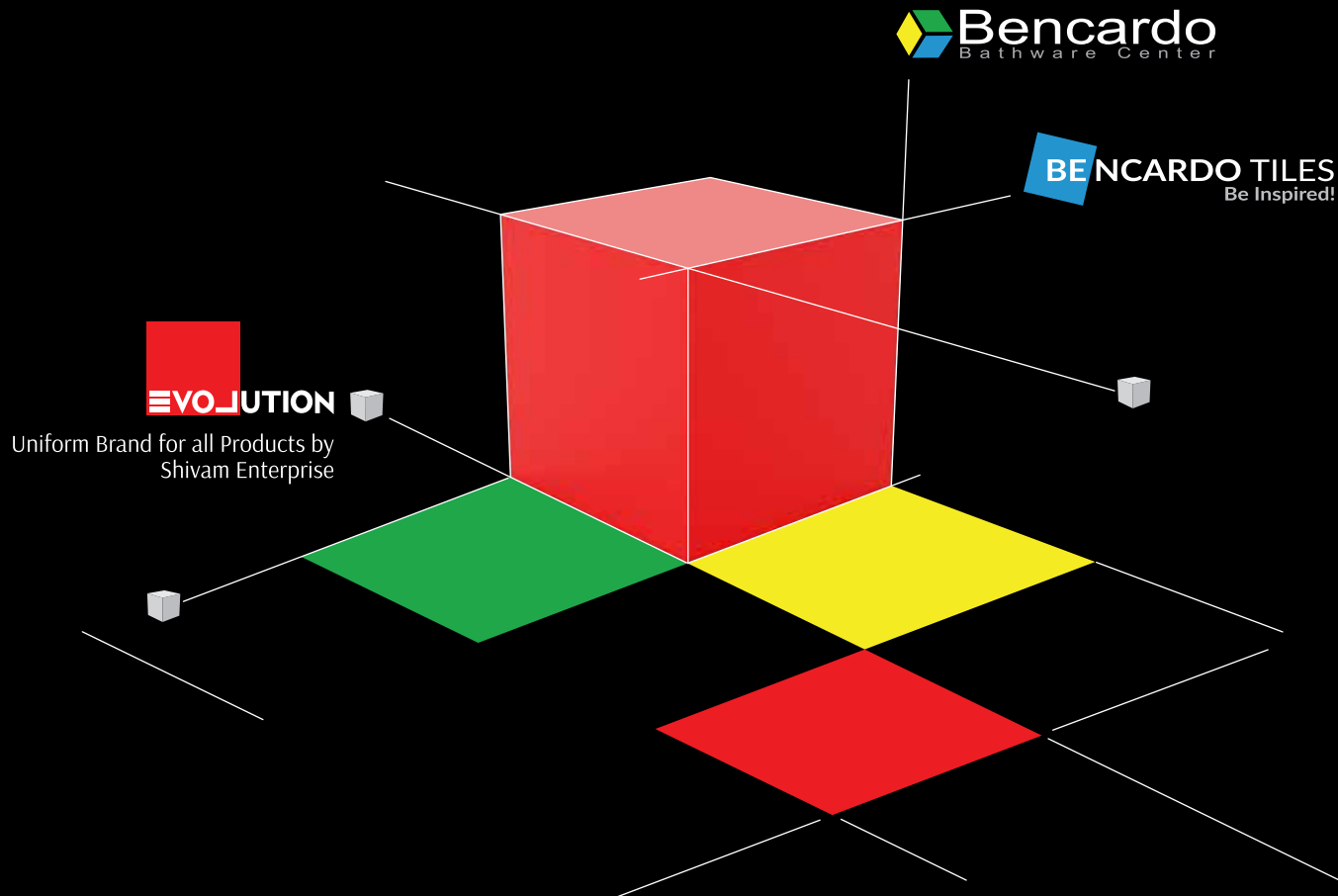


F O R T H E L O V E O F T I L E S

T I M E L I N E



FOR THE  OF TILES



Introducing the amalgamation of our company, EVOLUTION and a global hi-tech manufacturer of premium Bathware Products & solutions, BENCARDO BATHWARE CENTER.

IT'S A NEW ERA, DESIGNED FOR HIGH PERFORMANCE & PERFECTION



SPRAY DRYER

In-house facility for
◀ **BEST QUALITY CLAY** ▶



PRESS

Heavy Duty Press
◀ **Sacmi - Italy** ▶
for highest strength
& durability



KILN

Extra long Kiln with
◀ **ITALIAN TECHNOLOGY** ▶
for best Quality Tiles



DIGITAL PRINTER

World's Best Printer
◀ **6 COLOUR** ▶
Digital Printer
for Excellent Clarity

◀ TECHNOLOGY AT ITS BEST ▶

In order to be distinctive and the best at what they do, the company uses state of the art technology without any compromises in the finesse and quality of the products.

Using high end machinery imported from Italy, contributes to the Company's success in being one of the best floor tiles and wall tiles manufacturers in the country today.





REACTIVE SERIES > 600mm X 600mm



REA TIMBER WOOD



REA FOREST WENGE



REA GLASSIER GRES



REA HACKBERRY NATURAL



REA ATLAS RUST



REA SANDFACE CREMA

HARD MATT PUNCH > 600mm X 600mm



5001



5002 RENDOM



5005



5008 RENDOM



5009



5014



5010 RENDOM



5034



5035



5039



5011 RENDOM



5003

HARD MATT PUNCH TILES

Our collection of hard matt punch tiles are versatile enough to satiate anybody. Suitable for all kinds of spaces, these tiles are water proof as well as stain resistant. The impeccable finish of each piece & pattern is precisely what hard matt punch tiles are designed to deliver.



5007



 HARD MATT PUNCH > 600mm X 600mm



5032



5030



AARON NEGRO





 HARD MATT PUNCH > 600mm X 600mm



5016



5017



5018



5004



5021



5022



5012



5024



5025



5026



5027



5013



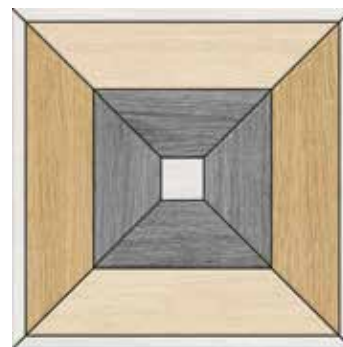
5036



5037



5038



5033



5019



5020



5028



5029







SATIN SERIES

Velvet to the touch, the satin series of tiles are best known for its high quality. These elegant tiles are available in attractive shades and mosaics. Ideal for bathroom and kitchen walls, satin tiles are a one of a kind choice.



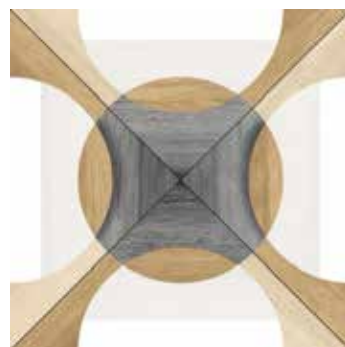
2135



2020



2022



2023



2024



2025



2029



2069



2054



2058



2059



2067

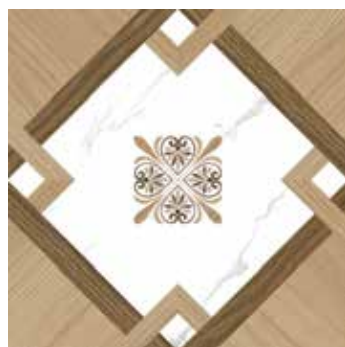


2030





2088



2128



2097



2108



2114



2115



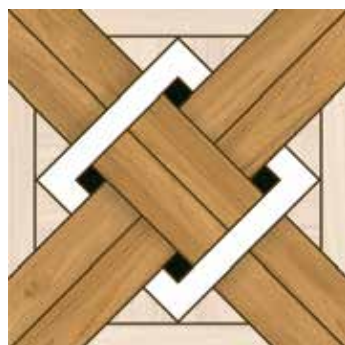
2119



2121



2123



2125



2127



2092





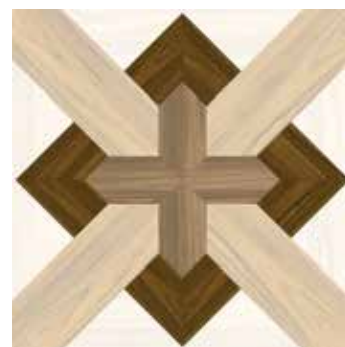
2134



2179



2141



2143



2144



2145



2148



2154



2175



2158 (2010)



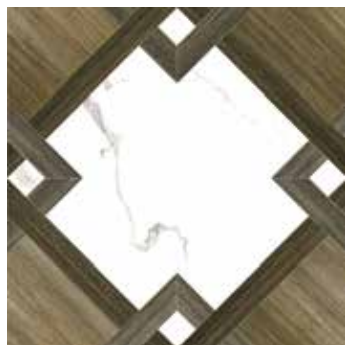
2159 (2092)



2161



2162



2165



2174



2169



2168



2156





2007



2008



2009



2014



2131



2070



2071



2078



2079



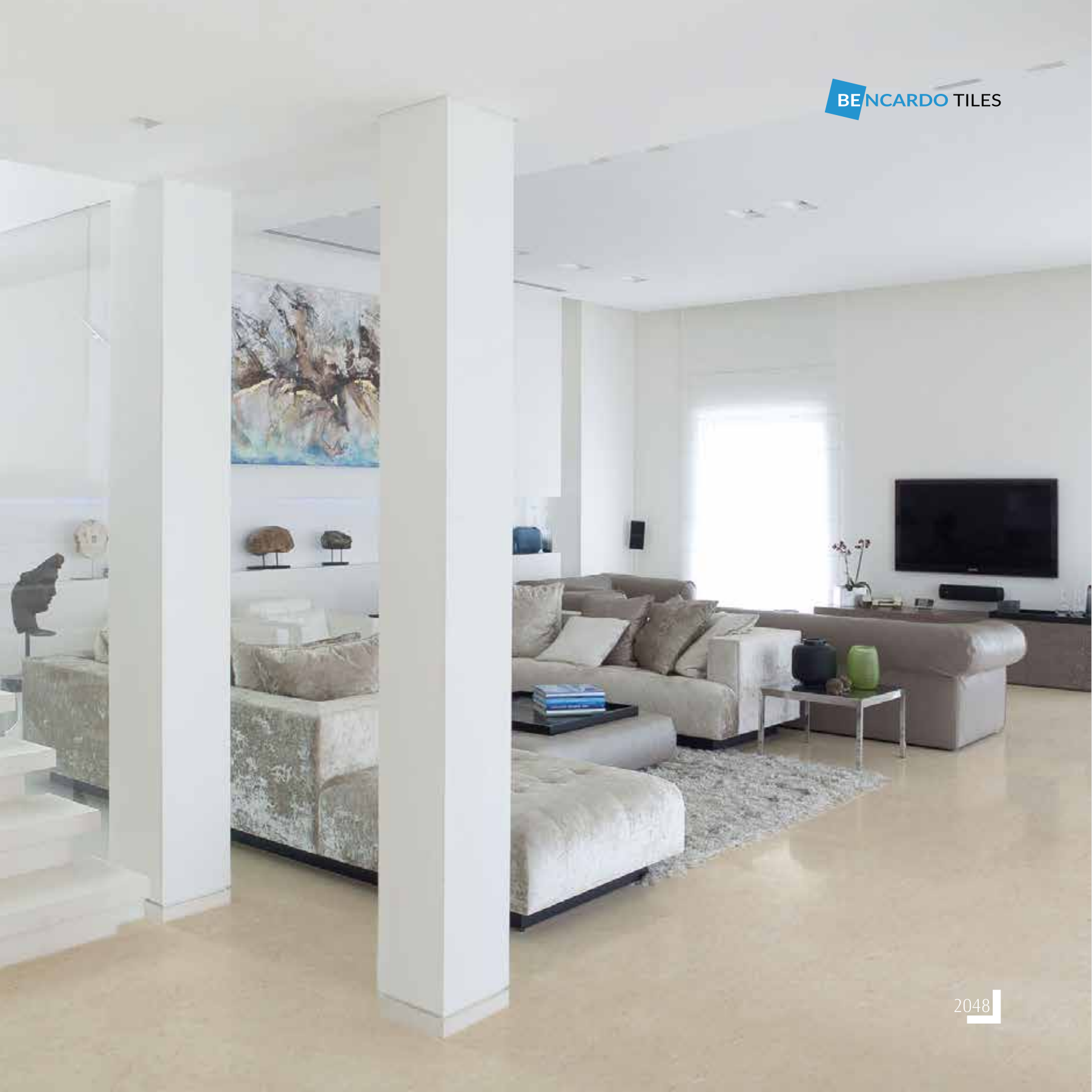
2097



2101



2048





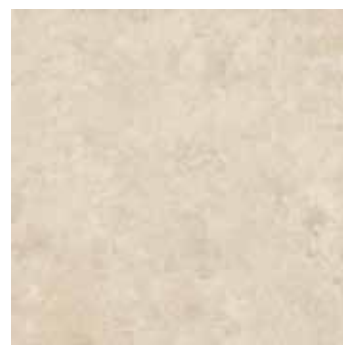
2132



2189



2166



2167



2182



2183



2184



2185



2186



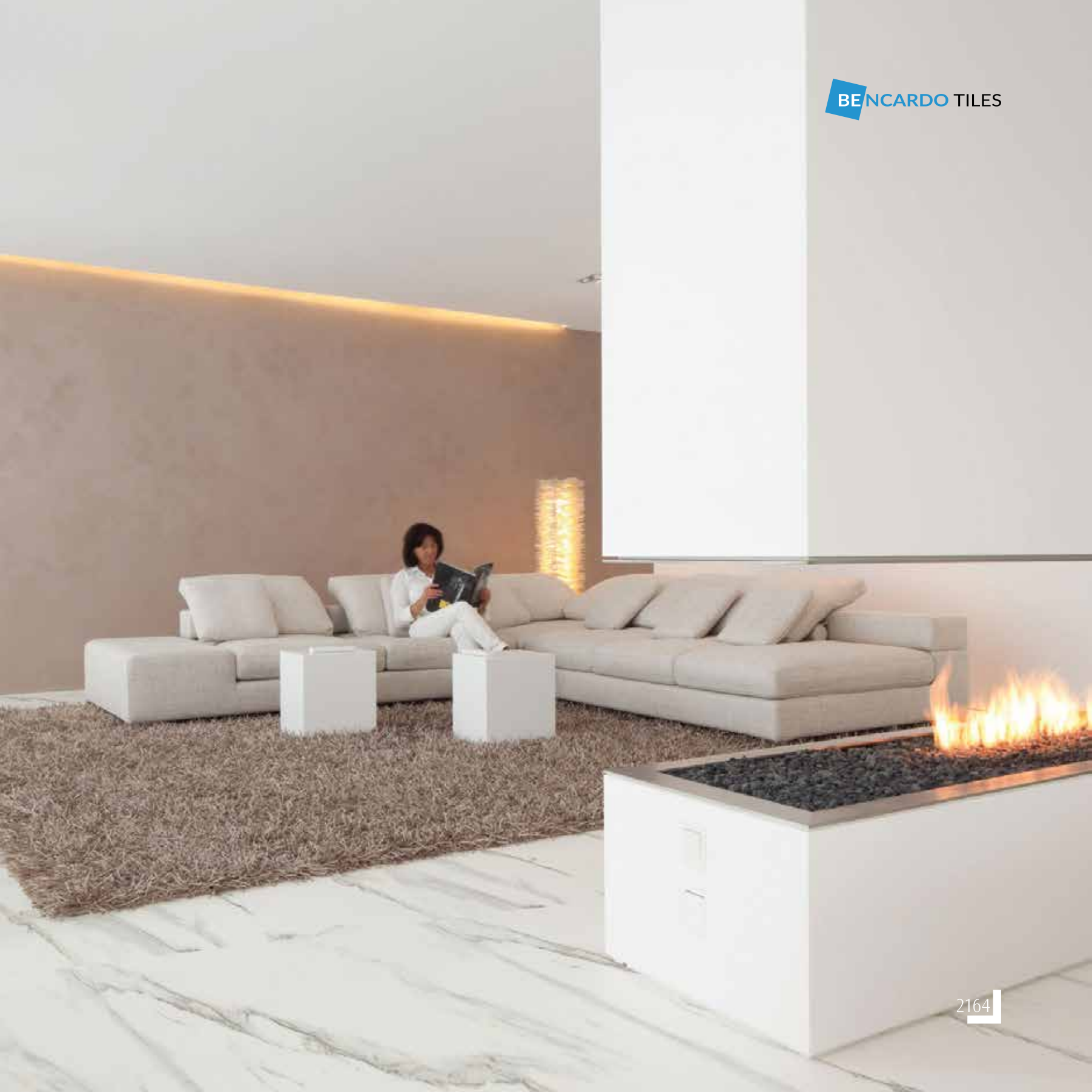
2187



2188



2164





2061



2089



2136



2137



2146



2149



2155



2157



2170



2171



2172



2173



2181



2180



2177





SATIN SERIES TILES

Velvet to the touch, the satin series of tiles are best known for its high quality. These elegant tiles are available in attractive shades and mosaics. Ideal for bathroom and kitchen walls, satin tiles are a one of a kind choice.



2160



2163



2178



2176

VK 1011

CONCRETE EFFECT PORCELAIN FLOOR TILE

Ideal for those with an affinity for neutral shades, concrete effect porcelain tiles are just apt in order to add a hint of sophistication to any space. With a concrete and mortar like effect, these tiles never fail to give an overall modern appearance regardless of where they are laid.



VK SATIN > 600mm X 600mm

BENCARDO TILES



VK 1001



VK 1002



VK 1003



VK 1004



VK 1010



VK 1007



VK 1008



VK 1009



VK 1011



VK 1005



VK 1012



VK 1013



VK SATIN > 600mm X 600mm

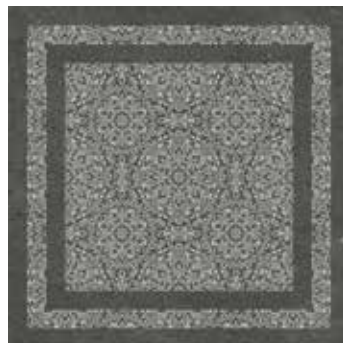
EVOLUTION



VK 1014



VK 1015



VK 1015 2



VK 1016



VK 1017



VK 1018



VK 1019



VK 1020



VK 1020 REMOVE CORNER



VK 1021



VK 1022



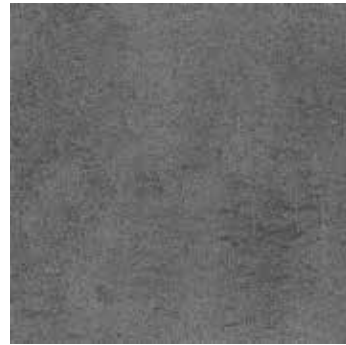
VK 1023



VK 1024



VK 1025



VK 1026



VK 1027



VK 1028



VK 1029



VK 1030



VK 1032



VK 1033



VK 1034



VK 1035



VK 1036





Technical Specification

Sr No.	Particulars	Method of Testing	Standars as par ISO 13006/EN 176 Group Bla	EVOLUTION VALUE
1.	Deviation in length	EN 98	±0.50%	±0.30%
2.	Deviation in Thickness	EN 98	5%	3%
3.	Straightness of side	EN 98	0.50%	0.30%
4.	Rectangularity	EN 98	0.60%	0.30%
5.	Surface Flatness	EN 98	0.50%	0.30%
6.	Water Absorption	ISO 10945.3 EN 98	< 3	3 < 5
7.	Mohs Hardness	EN 101	> 5	> 5
8.	Flexural Strength	–	>35 N/Sq.mm	> 39 N/Sq.mm
9.	Abrasion Resistance	ISO 10545.6 EN 102	AS Specified by Manu	PE I 3
10.	Frost Resistance	ISO 10545 - 11	Frost proof	Frost proof
11.	Chemical Resistance	ISO 10545 - 18	No damage	No damage
12.	Thermal shock Resistance	ISO 10545 - 9	No damage	No damage
13.	Colour Resistance	–	No damage	No damage
14.	Stain Resistance	ISO 10545 - 14	Resistance	Stain Proof
15.	Moisture Expansion	ISO 10545 - 10	Nil	Nil
16.	Crazing Resistance	–	Min 2 Cycle	Min 4 Cycle

TILES FIXING INSTRUCTION

1. Before laying of the tiles finish the surface of the floor with wood float finish and complete the rendering and curing at least two weeks prior to laying, please note that do not fix tiles on fresh surface.
2. Check few boxes before laying to make yourself satisfied for the color variation also make sure that the design pattern and the arrow marked on back side of tiles must be in the same direction, please note that certain amount of shade variation and size variation are the inherent characteristic of ceramic product the company will bear any responsibility once tiles are fixed.
3. To fix glazed vitrified tiles on the floor conventional sand cement can be used but it is advisable to use tile fixing adhesive only for well application . also note that with the use of fixing media , all the instruction provided along with the must be followed. do not use neat cement.
4. Glazed vitrified tiles are specially rectified tiles and since they have very low moisture and thermal expansion they can be laid without joints it is not necessary to leave gaps between two tiles but for better aesthetic value and for guaranteed use. providing spacer in between the tiles is recommended. At the time of laying do not use an iron hammer some have material to press the tile.
5. After fifteen minutes of the fixing tiles should be wiped with a damp sponge and clean the tiles with a soft dry cloth.
6. Company does not bear any liability for problem arising out of non fulfillment of the tile fixing instruction.
7. To cleaning the tiles use water or diluted soap solution followed by water with soft cloth or sponge . do not rub hard on surface. nothing in this instruction is substitute for good workshop or supervision

www.evolutionceramic.com





INDIA

9437/10, 1st Floor, Multani Dhanda, Paharganj, New Delhi - 110055, India
+91 9899271892 | india@bencardo.com

NEPAL

4th Floor Divine Complex, Kalimati Chowk, Kalimati, Kathmandu, Nepal
+977 9801115862 | +977 9802031373 | sales@bencardo.com

CHINA



Room No. 2023C, Taojin Garden Business Centre, Building No. 98, Hengfu Road, Yuexie District, Guangzhou, China
+86 2083525820 | +86 13302397760 | +86 13416219401 | china@bencardo.com

HONGKONG

Singhania Overseas Limited. Goldfeldind Building, Tailia Pai Road, Tsuen Wan Nt Hongkong
+86 13302397760 | hk@bencardo.com

QATAR

Goal W Feal Trading WLL, Umm Salal Mohammed, 2nd floor Building no:125. Flat no:18. Doha, Qatar
+97455111955 | +97433123431 | sales.doha@bencardo.com

Follow us on  : facebook.com/bencardobathware  : instagram.com/bencardo

A GROUP OF
Antique[™]
VITRIFIED TILES

EVOLUTION
FOR THE LOVE OF TILES



www.bencardo.com

Lakhdhipur Road, 8-A NH, Morbi - 363641, Gujarat, INDIA | +91-97279 50150 | care@evolutionceramic.com